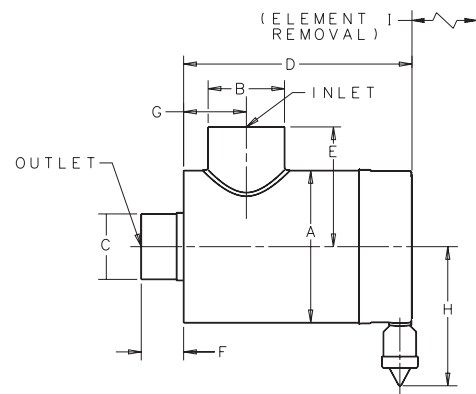
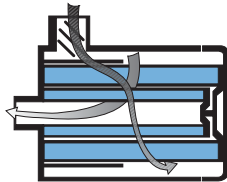


Airflow pattern "G"
Air in the side, out the end.



FVG Specifications

Part Number	Initial Restriction			Body Diameter		Inlet Diameter		Outlet Diameter		Length		Inlet Length		Service Clearance							
	6 H20	8H20	10H20	(A) in	(A) mm	(B) in	(B) mm	(C) in	(C) mm	(D) in	(D) mm	(E) in	(E) mm	(F) in	(F) mm	(G) in	(G) mm	(H) in	(H) mm	(I) in	(I) mm
G160376	730	880	1000	16.00	406	7.00	178	7.00	178	20.87	530	13.00	330	3.88	99	5.28	134	13.80	351	20.72	526
G160587	930	1070	1200	16.00	406	7.00	178	7.00	178	24.87	632	13.00	330	3.88	99	5.75	146	13.80	351	24.50	622

FVG Service Parts

Part Number	G160587	G160376
Primary Safety Element	P182049 P116446	P124867 P124866
Primary Element Wing Nut Retaining Clip	P116175 P105738	P116175 P105738
Safety Element Castle Nut	P109063	P109063
Split Pin Gasket Washer Vacuumator Valve	P109107 P105740 P105220	P109107 P105740 P103198

NOTES:

2 x H000351 are required for proper installation
P182049 Primary Filter shipped with the G160587 air cleaner initially