

## Ordering Information

Assembly* Part Number	Filter Element
FS1242B	FS1242

\* Assembly includes self-venting drain valve, clear collection bowl, and filter element.

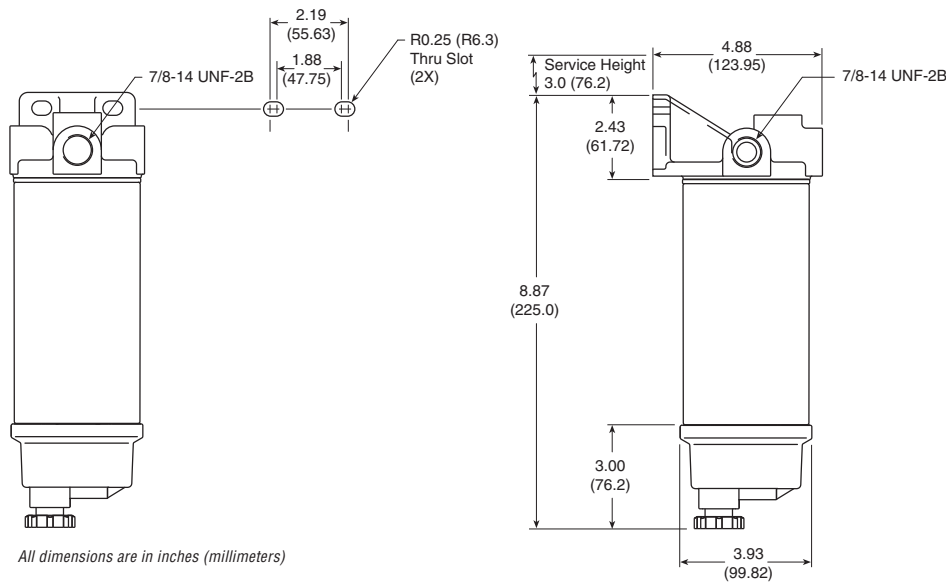
## Replacement Filter

Part Number	Description
FS1242	90 gal/h (340.69 L/h) Spin-On Fuel/Water Separator

## Filter Specifications

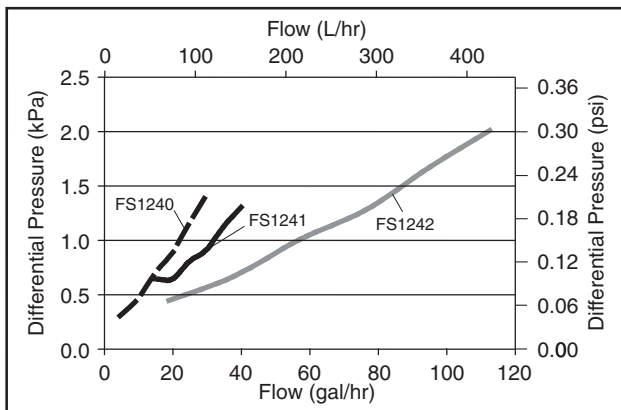
- Emulsified Water Separation: 90% per SAE J1488
- Free Water Separation: 90% per SAE J1839
- Efficiency: 98.7% @ 25 $\mu$  @ rated flow per SAE J1985
- FS1015 StrataPore Upgrade Efficiency: 98.7% @ 10 $\mu$  @ rated flow per SAE J1985

## Mounting/Dimensions

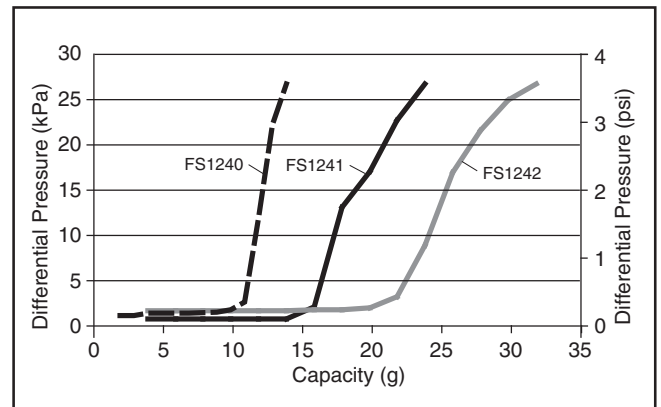


## Performance

### Filter Restriction vs Flow



### Filter Capacity vs Restriction



Note: Capacity vs Restriction tests run with a Flow Rate of 95 gal/h. Performance data based on #2 Diesel.

