

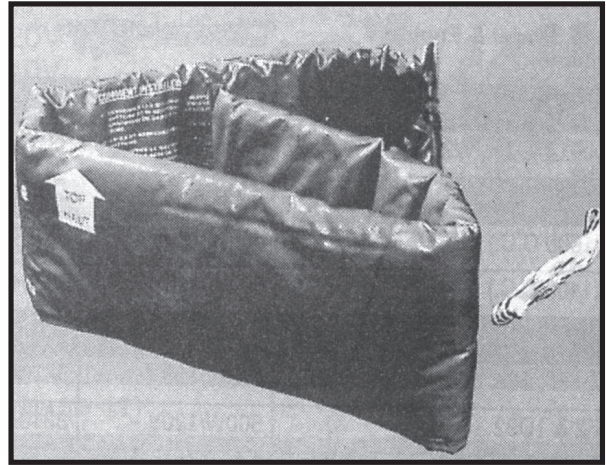
Battery Warmer Blanket

Part Number 3313276 160W/120V

Batteries have only 75% of cranking power available at 10°F. By -5°F, only about 60% is available; by -40°F, cranking power is virtually nonexistent. Battery warmers plug into the nearest outlet to retain cranking power for ready starts.

The Fleetguard wrap-around battery warmer offers:

- Fast, easy installation.
- Enough warmth to keep full battery power through the coldest nights.
- Oil and acid resistant heavy vinyl cover.
- Thick fiberglass insulation retains warmth even when warmer is not plugged in.
- CSA approved
- Not recommended for nickel cadmium batteries.
- 72" long x 5" high.



Automotive and Light Diesel Coolant Tank Heaters

For automotive and light diesels, Fleetguard offers two types of circulation tank heaters. These heaters can be used where immersion units are not available or where a faster warm-up is desired. Both feature an internal thermostat and check valve.

(5/8" Hose Connectors)

Part No.	Watts/Volts	Application
3307059	1000/120	V8 overnight
3825403	1000/240*	V8 fast warm-up
3307046	1500/120	V8 fast warm-up
3307060	2000/120	Large V8 gas or diesel
3830329	2000/240*	Large V8 gas or diesel

Note: Coolant tank heaters may be used on any automotive engine except when there is vacuum controlled factory air conditioning with one heater hose to the radiator and the other to the water pump housing (*240V models thermostats are set at 70° to 120°)

Small Tank Heaters

- High impact plastic (no moving parts)
- Nothing to corrode
- 120 & 240 Volts
- Thermostatically controlled
- All parts field replaceable
- Compact design—easy to mount



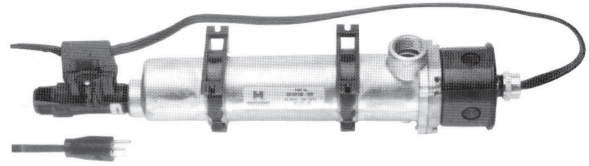
NRTL/C

Heater Part No.	Volts	Watts	Temp. Range
3890242C	120	500	
3890243C	120	1000	
3890244C	240	1000	on at 100F.
3890245C	120	1500	off at 120F.
3890246C	240	1500	
3890247C	120	1800	
3890248C	240	2000	

XI

Tank Style Coolant Heaters

- Standard tank style coolant heaters are weather tight
- All models are compatible in both 50 and 60hz applications
- All listed are for Single Phase applications
- Power cords are included with all except for the 480 Volt applications
- A junction box is required with 480 Volt applications



HEATER PART NUMBERS	VOLTS	WATTS	AMPS	REPLACEMENT ELEMENT
3896692	120	1500	12.5	3897709
3896693	240	1500	6.2	3897710
3896694	480	1500	3.2	3897711*
3896695	120	2000	16.7	3897712
3896696	240	2000	8.3	3897713
3896697	480	2000	8.3	3897714*
3896698	120	2250	18.8	3897715
3896699	240	2500	10.4	3897716
3896700	480	2500	5.2	3897717*
3896701	240	4000	16.7	3897718*
3896702	480	4000	8.3	3897719*

BELOW ARE APPLICATIONS THAT ARE BOLTED INTO TANK USING 4 BOLTS

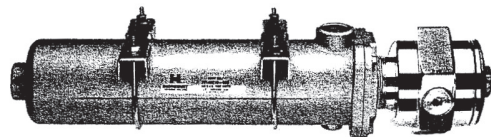
*Only fit heaters that the element threads into the tank

HEATER PART NUMBERS	REPLACEMENT ELEMENT THREAD IN DESIGN	REPLACEMENT ELEMENT BOLT IN DESIGN
3896694	3897711	3935659
3896697	3897714	3935660
3896700	3897717	3935661
3896701	3897718	3935662
3896702	3897719	3935663



Hazardous Location Tank Style Coolant Heaters

- Three Phase applications
- Use where combustibile materials or gasses are prevalent
- All 3 phase applications require a junction box

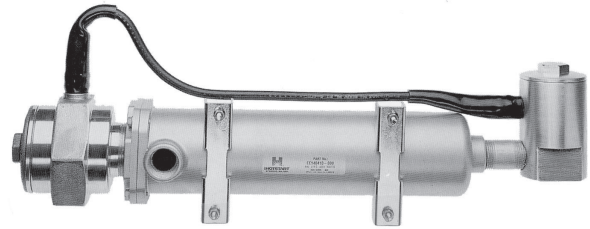


HEATER PART NUMBERS	VOLTS	WATTS	AMPS	REPLACEMENT ELEMENT
3896703	240	2000	4.8	3897720
3896704	480	2500	3.0	3897721
3896705	240	4000	9.6	3897722
3896706	480	4000	4.8	3897723

Pre-assembled Hazardous Location Models

Hazardous Location Tank Style Coolant Heaters Complete With Thermostat

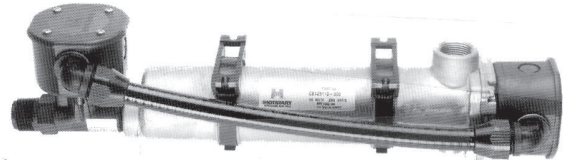
- Single phase applications
- Use where combustible materials or gasses are prevalent
- Thermostats open **on** at 100°F and **off** at 120°F



HEATER PART NUMBERS	VOLTS	WATTS	AMPS
3896707	120	2250	20.8
3896708	240	2500	10.4

Industrial Tank Style Coolant Heater Complete With Thermostat

- Single phase applications
- Designed to be “hard wired”
- Pre-wired with a thermostat for constant temperature applications
- Equipped with a thermostat that opens **on** at 100°F and **off** at 120°F



HEATER PART NUMBERS	VOLTS	WATTS	AMPS	REPLACEMENT ELEMENT	ELEMENT ATTACHMENT METHOD
3896709	120	1500	12.5	3897724	4 Bolt Flange
3896710	120	2500	20.8	3897725	4 Bolt Flange
3896711	240	2500	10.4	3897726	4 Bolt Flange
	240	4000	16.7	3897727	2” NPT Threads
3896712	240	4000	16.7	3935662	4 Bolt Flange

Accessories for Tank Heaters

PART NUMBERS	DESCRIPTION
3310553	Oil pressure switch for automatic cut-off on stand-by equipment. (Two pole 120/240/277 volts - 25 amps. 277/380/480 volts - 15 amps.)
3312941	Junction box with contactor and control transformer pre-assembled to use on three phase or single phase units above 277 volts.

XI

Replacement Parts for Now Obsolete Tank Heaters

Replacement heating elements are noted beside each part number below. Other replacement parts are universal, as shown below.

Obsolete Heater Part Number	Replacement Element
259269	259297
259271	259299
259273	259301
259275	259303
259278	259306
259282	259310
259283	259311
259285	259313
259288	259316
259289	259317
259270	259298
259274	259302
259276	259304
259279	259307
259281	259309
259284	259312
259286	259314
3317938	3834694
3312920	3312925
3312921	3312926
3312922	3312927
3312923	3312928
3312930	3312933
3312931	3312934
3312936	3830325
3312937	3830326
3312938	3830327
3312939	3830328

Thermostats

Optional tank heater thermostats save electricity and hold perfect block temperatures. These heavy duty thermostats are installed on the intake side of the tank heater. All thermostats have 1" NPT openings and all operate at 25 amps.

Part No.	Temp Range		Replacement Sending Unit P/N
	ON	OFF	
3910312	80°F	100°F	3910316
	27°C	38°C	
3910313	100°F	120°F	3910317
	38°C	49°C	
3312942 Explosion Proof Model	100°F	120°F	N/A
	38°C	49°C	
3910314	120°F	140°F	3910318
	49°C	60°C	
3910314 Explosion Proof Model	100°F	120°F	N/A
	38°C	49°C	
3910315	140°F	160°F	3910319
	60°C	71°C	

